

Two areas of research



Nutrition and salinity in marine invertebrate larvae: special emphasis on the echinoderms

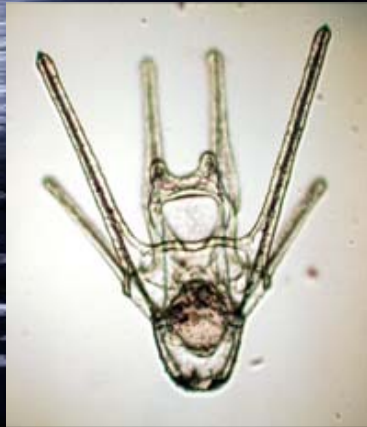
Salt marsh ecology

☞ Invasive and non-invasive techniques for measuring fiddler crab abundance

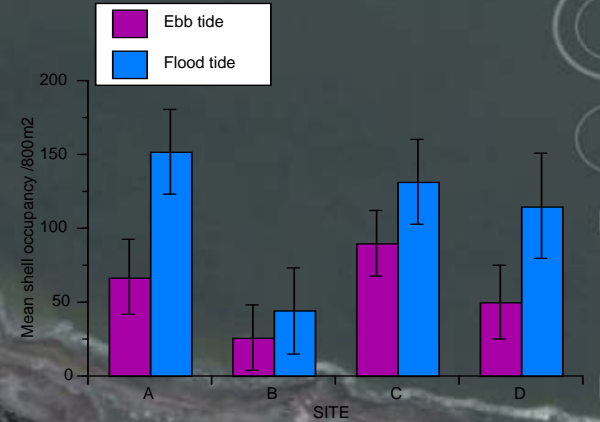
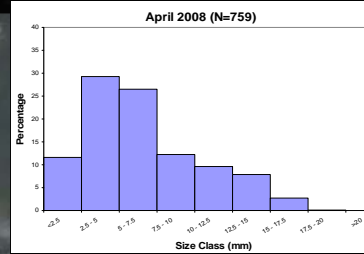
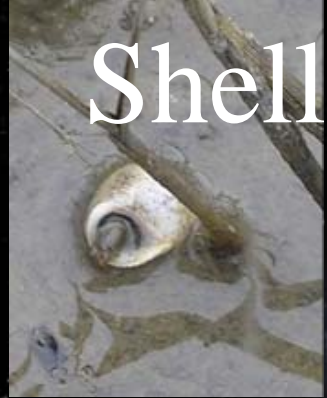
☞ Interaction between snails and fiddler crabs: shell use by juvenile fiddler crabs

*Sophie George, Professor
Biology department
Georgia Southern University
Statesboro, GA*

*How does the percentage of dietary fatty acids (FA) affect the percentage of FA accumulated/ incorporated in the larval tissues?
How does constant low, single and multiple fluctuations in salinity affect larval morphology and development to metamorphosis?*



Shell use by juvenile fiddler crabs



Bottom line: conservation!

The persistence of fiddler crab populations might in part depend on protection of the high marsh where the highest densities of shells suitable for use by juvenile fiddler crabs are found!