

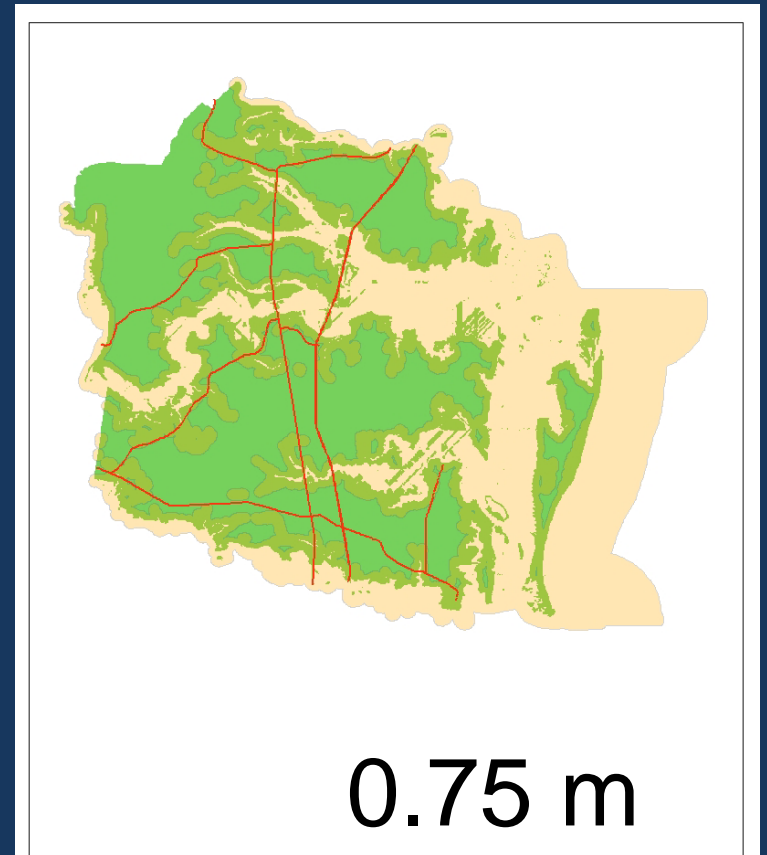
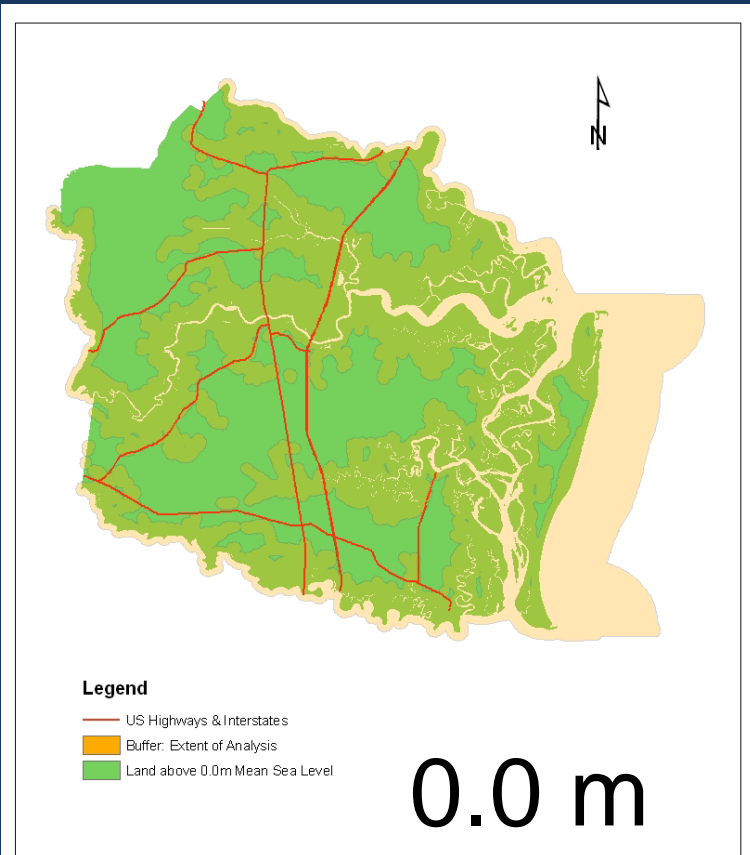
Map of the proposed extent of the survey, showing the lower Altamaha River, Altamaha Sound, Sapelo Island, the Sapelo River, and the SINERR boundary.

- Sapelo NERR Boundary
- Proposed Study Boundary



Produced 17oct2008
by B.L.Nuse.

Camden County, GA



Bird and vegetation surveys in the tidal ecosystems of the Lower Altamaha and its estuary...

Bryan Nuse and Robert Cooper
Warnell School of Forestry and Natural Resources, UGA

Questions? Advice?

nuseb@warnell.uga.edu

Funded through a Graduate Research Fellowship by NOAA's National Estuarine Research Reserve System (NERRS).

