

St. Catherines Island Sea Turtle Conservation Program

24 years of *Conservation , Research and Education*

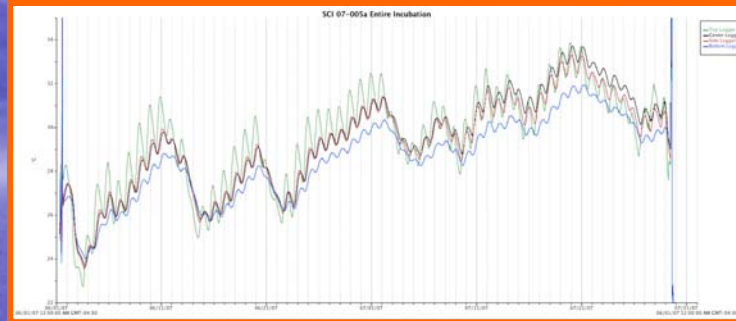
- Co-directors Kelly Vance & Gale Bishop
- Academic Connection: Georgia Southern University
- Featuring integrated coastal science courses using a sea turtle conservation experience as “delivery vehicle”
- Partners/Support: Royce Hayes (Superintendent – SCI), Fred Rich (Georgia Southern University), Terry Norton GSTC, GA DNR



St. Catherines Conservation, Research and Education



Nesting data collection



MS research – thermal logging, Katy McCurdy



Sea Turtle Conservation Interns



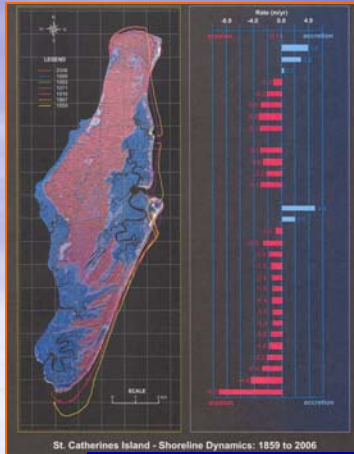
Genetics program sample collection – Brian Shamblin (UGA)



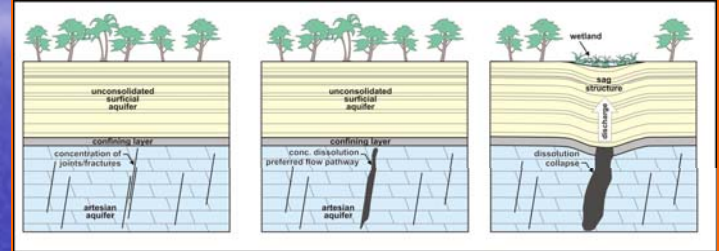
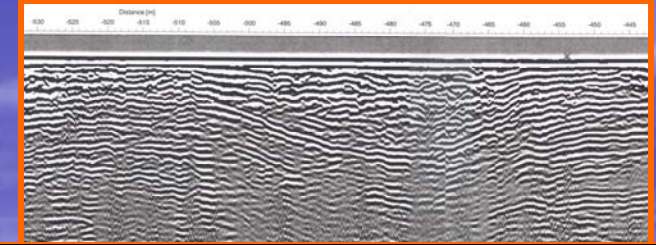
Field-based Summer Courses



St. Catherines Island - Research and Associates



Brian Meyer – Georgia State
(PhD Shoreline Dynamics)



Vance, Bishop, Meyer, Reichard, Rich –
GPR, structure, stratigraphy, hydrology



Fred Rich –
palynology,
paleoenvironments
horseshoe crabs



Dave Thomas –
AMNH crews: Elliot
Blair, GiNESSA Mahar,
Anna Semon



Tony Martin-
ichnology, Emory
University with
Skaggs & Page



Jim Reichard -
hydrogeology